



# OMEA Rudiment Requirements

(Revised 2019)

## HS Open Class

**1** Double Stroke Open Roll



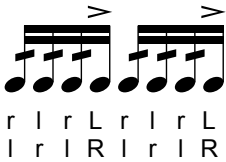
**2** 5 Stroke Roll



**3** 6 Stroke Roll\*



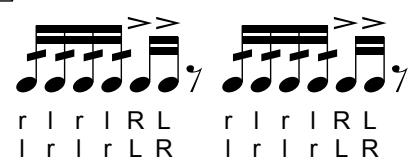
**4** 7 Stroke Roll\*



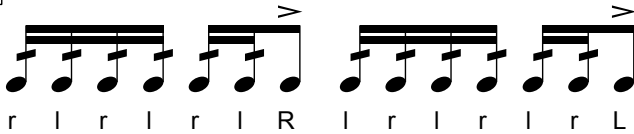
**5** 9 Stroke Roll



**6** 10 Stroke Roll\*



**7** 13 Stroke Roll



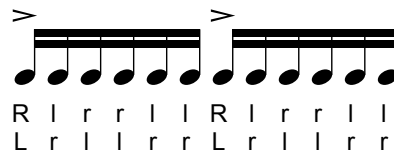
**8** Single Paradiddle



**9** Double Paradiddle



**10** Paradiddle-diddle\*



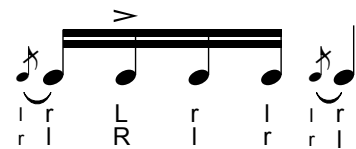
**11** Flam



**12** Flam Accent



**13** Flamacue\*

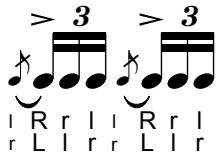


**14** Flam Paradiddle



**15** Pataflafla



**16** Swiss Army Triplet\*

1 R r | 1 R r |  
r L | r r | L l r

**17** Inverted Flam Tap

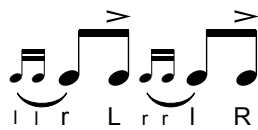
1 R | 1 r L r | 1 R | 1 r L r

**18** Flam Drag

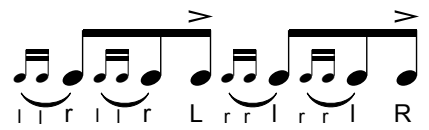
1 R | 1 l r r | L r r |

**19** Drag

1 l R | r L | 1 l R | r L

**20** Single Drag Tap

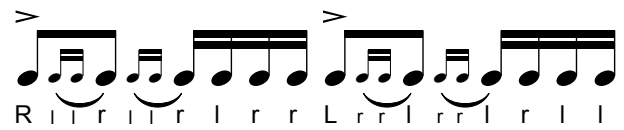
1 l r | L r r | 1 R

**21** Double Drag Tap

1 l r | l r | L r r | r r | R

**22** Drag Paradiddle #1

R | 1 l r | r r | L r r | r l |

**23** Drag Paradiddle #2

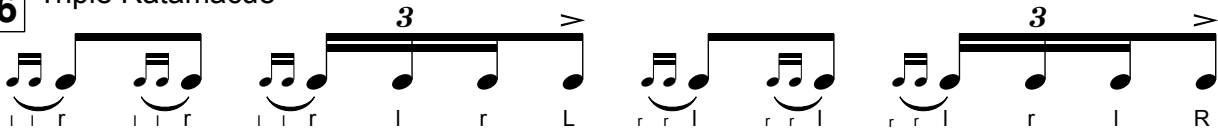
R | 1 l r | l r | r r | L r r | r r | r l |

**24** Single Ratamacue

1 l r | l r L r r | r l R

**25** Double Ratamacue

1 l r | l r | l r L r r | r r | r l R

**26** Triple Ratamacue

1 l r | l r | l r | l r | l r L r r | r l R

\*Rudiments with two stickings may be played with either option (top row OR bottom row) and do NOT alternate. Each performer may choose which sticking they perform.

## Performance Requirements

1. Rudiments are to be performed from memory.
2. Open Class soloists will be asked 3 rudiments from the 26 rudiments shown above.
3. Open-Close-Open (OCO) or Slow-Fast-Slow performance is intended to demonstrate the student's control of each rudiment throughout a wide tempo range. A student should perform each rudiment in OCO style with significant tempo change and minimal dynamic variation. The rudiment should remain clear and accurate throughout, maintaining consistent note spacing and rhythm, as well as clarity of accents, grace notes, and double strokes. Performance length should fall between 15-30 seconds.